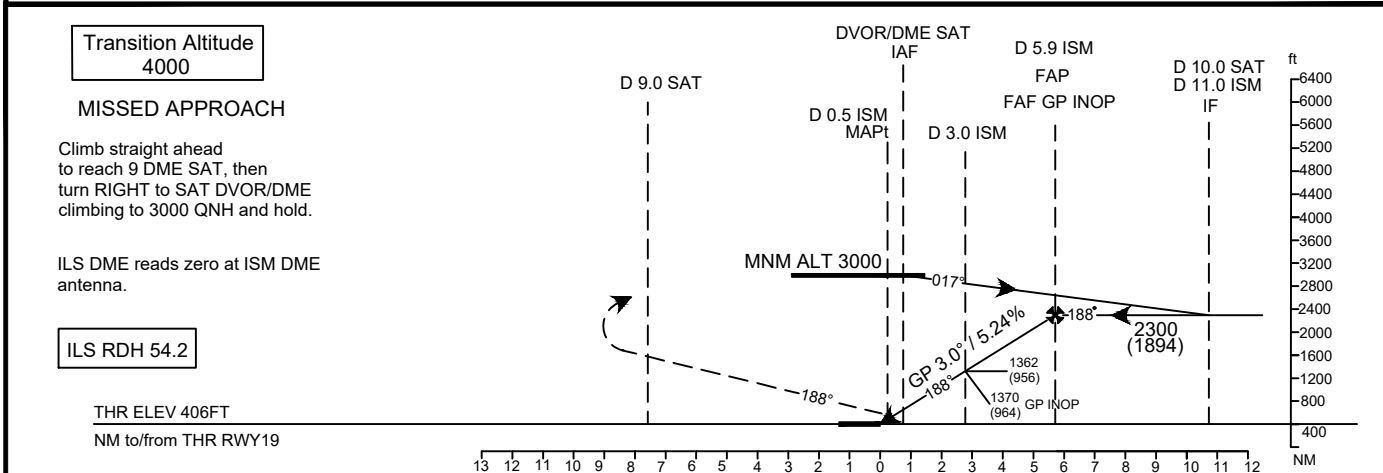
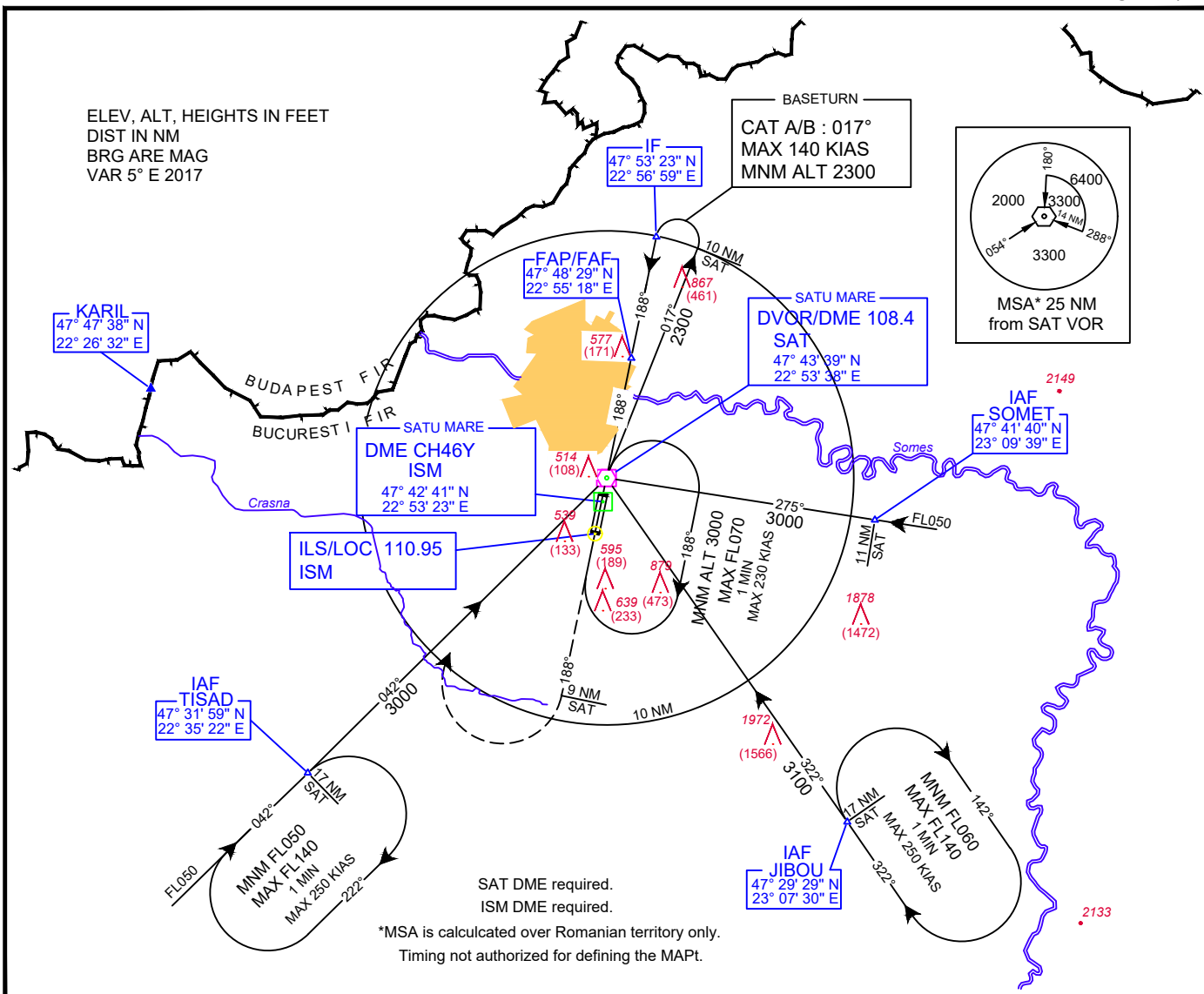


Satu Mare Tower



OCA/H		A	B
Straight-in Approach	Cat I	586 (180)	596 (190)
	Cat II	497 (91)	514 (108)
	GP INOP	830 (424)	
	GP INOP Stepdown FIX (D 3.0 ISM)	770 (364)	
Circling		930	

GS	kts	70	90	100	120	140	160
FAF-MAPt 5.45 NM	min:S	4:40	3:38	3:16	2:44	2:20	2:03
Rate of descent	ft/min	372	478	531	637	743	849

Timing not authorized for defining the MAPt.

Dist to ISM DME	NM	1	2	3	4
Altitude (Height)	ft	726 (320)	1044 (638)	1363 (957)	1681 (1275)