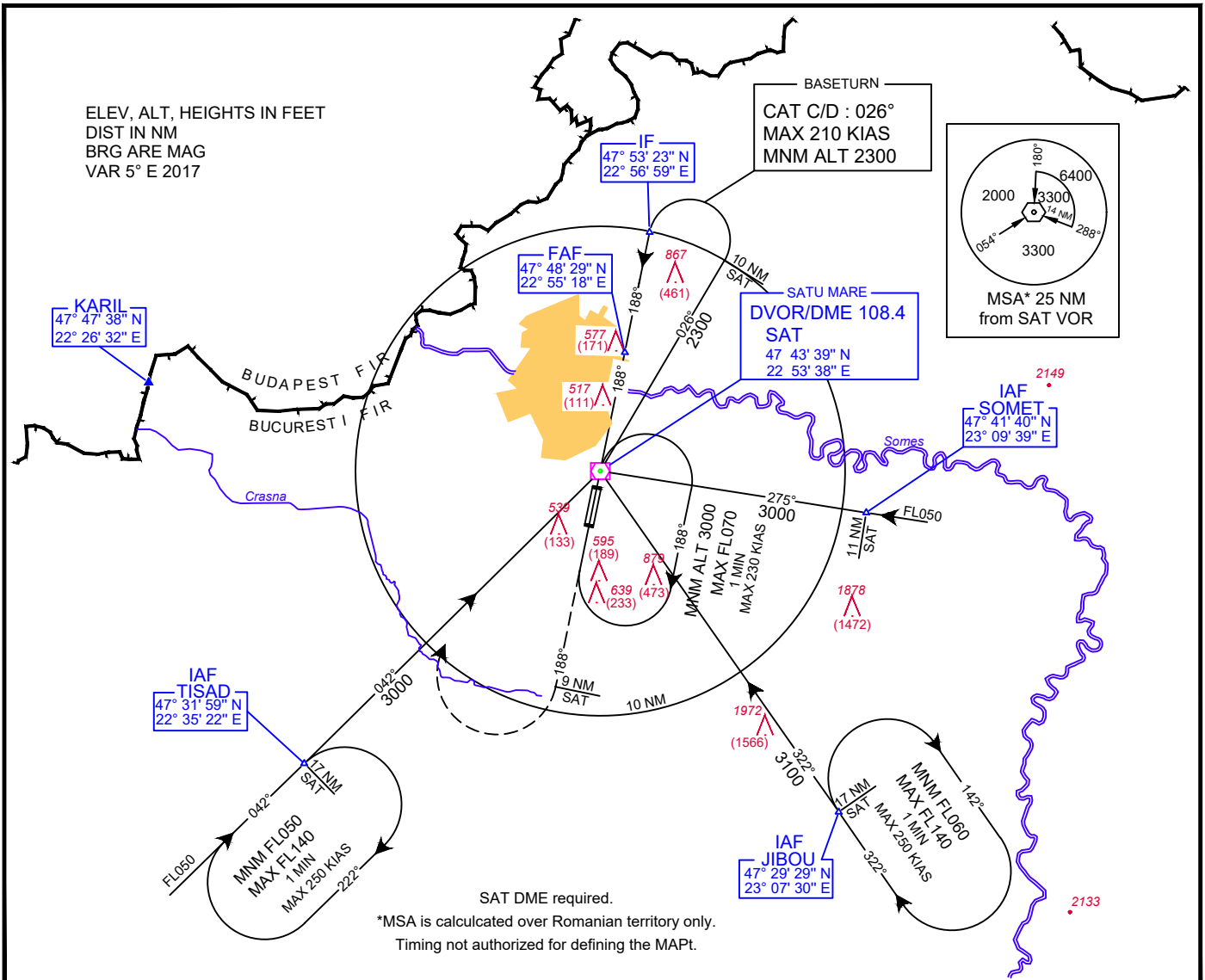


INSTRUMENT APPROACH
CHART - ICAO

AERODROME ELEV. 413 ft
HEIGHTS RELATED TO THR 19 - ELEV. 406 ft

SATU MARE / Satu Mare (LRSM)
VOR
RWY 19
CAT C/D

Satu Mare Tower

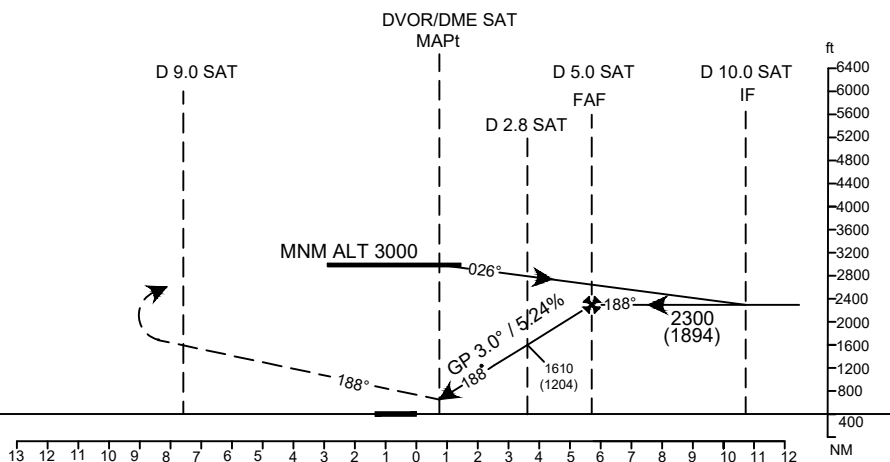


Transition Altitude
4000

MISSED APPROACH

Climb straight ahead to reach 9 DME SAT, then turn RIGHT to SAT DVOR/DME climbing to 3000 QNH and hold.

THR ELEV 406FT
NM to/from THR RWY 19



OCA/H		C	D
Straight-in Approach	Stepdown fix (D 2.8 SAT)	770 (364)	
	w/o stepdown fix (D 2.8 SAT)	830 (424)	
Circling		1280	

GS	kts	70	90	100	120	140	160
FAF-MAPt 4.97 NM	min:S	4:16	3:19	2:59	2:29	2:08	1:52
Rate of descent	ft/min	372	478	531	637	743	849

Timing not authorized for defining the MAPt.

Dist to SAT DME	NM	1	2	2.8	3
Altitude (Height)	ft	1031 (625)	1349 (943)	1604 (1198)	1667 (1261)